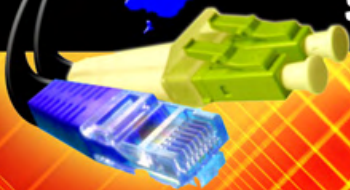






# Wired

## SHORT FORM CCTV CATALOGUE



<b>Part Number: E10180S</b>	<b>BNC Male Video Balun – Standard Case</b>
	<p>Compact Robust Casing to absorb higher level of cable stress.  Special balun for greater interference immunity.  Can be used with any single balun in the range.  Range up to 450 metres.  RJ45 Jack Pins 4+ 5-</p>
<b>Part Number: E10180R</b>	<b>BNC Male Video Balun – Slim Case</b>
	<p>Slim Case designed to fit directly onto DVR.  Range up to 450 metres.  Can be used with any single balun in the range.  RJ45 Jack Pins 4+ 5-</p>
<b>Part Number: E10180T</b>	<b>BNC Male Video Balun with Coaxial Tail</b>
	<p>100mm Mini Coax Tail allows for easier connection to DVR with limited space.  Can be used with any single balun in the range.  Range up to 450 metres.  RJ45 Jack Pins 4+ 5-</p>
<b>Part Number: E10180C</b>	<b>BNC Male Quick Connect Video Balun</b>
	<p>Connect RJ45 cable to balun in 15 seconds.  Slim Case designed to fit directly to DVR.  Can be used with any single balun in the range.  Range up to 450 metres.  IDC termination with secure anchoring of cable.  Tip (+) corresponds to centre pin of BNC connector Ring (-)</p>
<b>Part Number: E10180TC</b>	<b>BNC Male Quick Connect Video Balun with Coaxial Tail</b>
	<p>Connect RJ45 cable to balun in 15 seconds.  100mm Mini Coax Tail allows easier access to Camera and DVR.  Can be used with any single balun in the range.  Range up to 450 metres.  IDC termination with secure anchoring of cable.  Tip (+) corresponds to centre pin of BNC connector Ring (-)</p>
<b>Part Number: E10185S</b>	<b>BNC Female Video Balun</b>
	<p>Keystone Mount BNC or RJ45 front facing.  For Wall Outlets or Rackmount with short patch cable to DVR  Can be used with any single balun in the range.  Range up to 450 metres.  RJ45 Jack Pins 4+ 5-</p>

<p><b>Part Number: E10185C</b></p> 	<p><b>BNC Female Quick Connect Video Balun</b></p> <p>Connect RJ45 cable to balun in 15 seconds.          Use with patch cable where longer reach is required.          Can be used with any single balun in the range.          Range up to 450 metres.          IDC termination with secure anchoring of cable.          Tip (+) corresponds to centre pin of BNC connector Ring (-)</p>
<p><b>Part Number: E10185R</b></p> 	<p><b>BNC Female Video Balun</b></p> <p>Slim Case designed to fit in the most confined spaces.          Use with patch cable where longer reach is required.          Can be used with any single balun in the range.          Range up to 450 metres.          RJ45 Jack Pins 4+ 5-</p>
<p><b>Part Number: E10180SP</b></p> 	<p><b>Power Thru Video Balun – Standard Case</b></p> <p>Compact Robust Casing to absorb higher level of cable stress.          Special balun for greater interference immunity.          2.1 mm Plug for power connection to camera or use for tamper switch.          Range up to 250 metres when used with E10180SJ.          Cable length 100 mm.          RJ45 Jack: Pins 8+ 7- (Video)          Power Plug: Center Pin V+.</p>
<p><b>Part Number: E10180SJ</b></p> 	<p><b>Power Thru Video Balun – Standard Case</b></p> <p>Compact Robust Casing to absorb higher level of cable stress.          Special balun for greater interference immunity.          2.1 mm Jack for power feed to camera or use for tamper alarm.          Range up to 250 metres when used with E10180SP.          Cable length 100 mm.          Short circuit protection provided for power connection.          RJ45 Jack Pins 8+ 7- (Video)          Power Jack: Center Pin V+.</p>
<p><b>Part Number: E10522</b></p> 	<p><b>PTZ Video Balun - Video + Power Thru + PTZ Control for Camera</b></p> <p>Special High Performance Balun for much greater interference immunity.          Power feed to camera or use cable as tamper alarm. With Red Power LED.          Range up to 50 metres when used as a pair or with 16 Port Hub E10700A          RJ45 Jack: Pins 7+ 8- (Video) 1,3 + 2,6 – (Power), 4 + 5- (Control)          Power Cable Polarity: Solid Red V+.          PTZ Cable Polarity: Solid Black C -</p>
<p><b>Part Number: E10524</b></p> 	<p><b>Professional Power Thru Balun</b></p> <p>Special High Performance Balun for much greater interference immunity.          Power feed to camera or use cable as tamper alarm. With Red Power LED.          Range up to 305 metres when used as a pair or with 16 Port Hub E10700A          RJ45 Jack Pins 7+ 8- (Video) 1,3,5 (V+) 2,4,6 (V-)          Power Cable Polarity: Solid Red V+</p>

<b>Part Number: E10172</b>	<b>Quad Video Balun</b>
	<p>Shielded RJ45 Jack.</p>
<b>Part Number: E10172B</b>	<b>Quad Video Balun Panel Mount</b>
	<p>Connect 4 cameras to 1 Cat 5 cable using a pair of Quad baluns. Use with Quad Video Balun Unit E10172. Nylon mounting BNC Female Connector prevents ground loops. Range up to 400 metres. Shielded RJ45 Jack.</p>
<b>Part Number: E10600T</b>	<b>Active Transmitter – Range to 1.5 Km</b>
	<p>Switch selectable range 0.5, 1.0, 1.5 Km. 12VDC/24VAC compatible. Red LED for Power On and Green LED for Video On. Use in conjunction with Active Receiver E10600R. Comes as a set with E10600R as Part Number E10600TR.</p>
<b>Part Number: E10600R</b>	<b>Active Receiver – Range to 1.5 Km</b>
	<p>With independent Chroma and Luma controls to optimise picture quality. 12VDC/24VAC compatible. Red LED for Power On and Green LED for Video On. Use in conjunction with Active Receiver E10600T. Comes as a set with E10600T as Part Number E10600TR.</p>
<b>Part Number: E10610T</b>	<b>Active Transmitter – Range to 1.8 Km</b>
	<p>Higher performance unit. Switch selectable range 0.5, 1.0, &gt;1.5 Km. 12VDC/24VAC compatible. Blue LED for Power On and Green LED for Video On. Use in conjunction with Active Receiver E10610R. Comes as a set with E10610R as Part Number E10610TR.</p>
<b>Part Number: E10610R</b>	<b>Active Receiver – Range to 1.8 Km</b>
	<p>Higher performance unit. With independent Chroma and Luma controls to optimise picture quality. 12VDC/24VAC compatible. Blue LED for Power On and Green LED for Video On. Use in conjunction with Active Transmitter E10600T. Comes as a set with E10610T as Part Number E10610TR</p>

<p><b>Part Number: E10630T</b></p> 	<p><b>Active Video and Audio Transmitter – Range to 1.5 Km</b></p> <p>Switch selectable range L &lt;0.5, M 500-1.0Km, H 1.0-1.5 Km.          12VDC/24VAC compatible.          Red LED for Power On.          BNC Female Video in, RCA Jack Audio in.          Use in conjunction with Active Receiver E10630R          Comes as a set with E100630R as Part Number E10630TR</p>
<p><b>Part Number: E10630R</b></p> 	<p><b>Active Video and Audio Receiver – Range to 1.5 Km</b></p> <p>With independent Chroma and Luma controls to optimise picture quality.          12VDC/24VAC compatible.          Red LED for Power On.          2 BNC Female Video Outputs and 1 Audio Output.          Use in conjunction with Active Transmitter E10630T.          Comes as a set with E100610T as Part Number E10630TR.</p>
<p><b>Part Number: E10700A</b></p> 	<p><b>16 Port Versatile Balun Hub</b></p> <p>Switch selectable Video + Power Thru or Video + Power + PTZ mode          19" 1 RU Mounting          RJ45 Jacks with Designation Strip          Individual Power and PTZ Control connection using 4 Pin Plug          Use in conjunction with E10522 or E10524          RJ45 Jack Pins:          Power Thru Mode: Pins 7+ 8- (Video) 1,3,5 (V+) 2,4,6 (V-)          PTZ Mode: 7+ 8- (Video) 1,3 (V+) 2,6 (V-), 4 (Control +) 5 (Control -)</p>
<p><b>Part Number: E10170</b></p> 	<p><b>Quad RJ45 Adapter</b></p> <p>Splits RJ45 Cat 5 cable connection into 4 separate RJ45 outputs.          Enables all Cat 5 solution to balun connected directly to camera.          Use with single balun E10180S, E10180R, or E10180C at camera end and Quad Balun E10172 or E10172B at DVR end.          Can also be used with BNC Female Video Balun E10185S, E10185R or E10185C as required.          RJ45 Output Pinout: 4+ 5-</p>
<p><b>Part Number: E10500</b></p> 	<p><b>Ground Loop Isolator</b></p> <p>Quickly and easily fixes Hum Bars and tearing of picture caused by multiple ground loops.          Connects directly between camera and existing coaxial cable or between camera and Video Balun for Cat 5 installations.</p>



<p><b>Part Number: E10680CM</b></p> 	<p><b>VGA Balun</b></p> <p>Enables VGA Monitor to be remotely connected from DVR or computer using a shielded Cat 5e cable. Range is up to 60 metres depending on resolution used. Use in conjunction with Keyboard Mouse Converter E10800KM as a KVM extender up to 60 metres.</p>
<p><b>Part Number: E10800KM</b></p> 	<p><b>Keyboard Mouse Converter</b></p> <p>Enables Keyboard and Mouse to be connected to DVR or Computer using standard Cat 5e cable. Range is up to 100 metres Use in conjunction with VGA Balun E10680CM as a KVM extender up to 60 metres.</p>
<p><b>Part Number: E10510</b></p> 	<p><b>Surge Protector</b></p> <p>Protect sensitive equipment such as DVR from Lightning induced strikes. Use for applications where high incidents of lightning activities are encountered or where CCTV camera is installed on a high exposed structure such as a mast or telegraph pole.</p>
<p><b>Part Number: E10172P</b></p> 	<p><b>Quad Balun Blank Panel</b></p> <p>Enables 4 Quad Baluns E10172B to be rack mounted for professional finish. Black Powder Coated Satin Finish. Panel is without designation strip.</p> <p>For Panel with designation strip the Part Number is E10172PS.</p>

## Wired New Zealand Limited

Unit B, 2 Centennial Highway,

Ngauranga, Wellington

PO Box 17435, Karori,

New Zealand, 6147

Ph: 64-4-499-411

Fax: 64-4-499-4114

sales@wirednz.co.nz